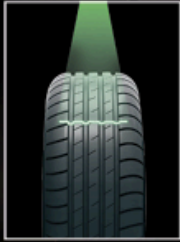


AUTEL MAXITPMS

# TREAD DEPTH MEASUREMENT & BRAKE DISC WEAR ANALYSIS

EXPANDED TIRE HEALTH ANALYSIS & REPAIR - POWERED BY AUTEL DIAGNOSTICS



Laser Tread Analysis



Brake Disc Wear Analysis



## MaxiTPMS TBE200

Larger Screen & Zoom Camera

- 1.65" AMOLED Super Retina Touchscreen
- 1 Megapixel Macro Camera
- 8 Megapixel Zoom Camera

Features & Functions

- Measurement Data Curve Display / Uneven Wear Analysis
- Detailed Replacement & Maintenance Suggestions
- Test Detail For Single Tire Tread / Brake Disc
- Tire Expiration Notice / Tire Recall Lookup / Scan DOT
- Take Photos of Tire Wear & Damage
- **NEW** Report Sharing via QR Code

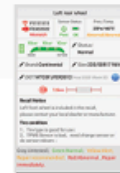


## COMPREHENSIVE TEST REPORT



Tread wear analysis:  
In good condition.  
Maintenance  
suggestion: The tire  
is in good condition, it  
can be driven about X  
kilometers more.  
Please check it on a  
regular basis.

Tire condition
Tire size
Tire DOT code
Retest



## COMPATIBLE WITH ITS600

TBE200 Features with the MaxiTPMS ITS600

- Comprehensive Test Report with TPMS (Requires ITS600)



#LOSTECHNICOSDEHOYREQUIRENEQUIPOSDEHOY

TELÉFONOS VENTAS:

DIRECTO 55-1671-8044

SERVICIO 55-5872-8806

WHATSAPP

55-4603-

3543

ventas@laredotools.com

# AUTEL MAXI TPMS COMPLETE TPMS SOLUTION FOR COMMERCIAL VEHICLES

ITS600 CV TPMS SERVICE TABLET + PROGRAMMABLE UNIVERSAL CV TPMS SENSOR CVS-A01

**TPMS SERVICE FOR COMMERCIAL VEHICLES**

Powerful Android tablet with a 5.5-inch touchscreen display, a quad-core processor, 64 GB hard drive, and a high-capacity battery. Equipped with Bluetooth VCI for wireless tablet-to-vehicle communication.

Provides comprehensive TPMS service for Light, Medium, and Heavy-Duty Commercial Vehicles

Industry-leading TPMS-equipped Bus, Truck, and Trailer Coverage, including those made by:

- Fuso
- Peterbilt
- Freightliner
- Mercedes-Benz
- MAN
- Kenworth
- DAF
- BYD (Buses)
- Ford
- EvoBus
- Volvo vehicles and select vehicles equipped with Bendix SmarTire series and WABCO OPTITIRE systems

P/N: 700420

SENSORS WITH METAL OR FABRIC BAND SOLD SEPARATELY. SEE BACK PAGE FOR DETAILS.

**ITS600 CV**

- Activate, Read, and Relearn all known TPMS sensors
- Linked Tractor and Trailer interfaces; service each independently, display up to 46 wheels and 12 axles
- Quickly switch between tractor and trailer screens for comprehensive sensor and tire analysis; activate, relearn, and program Autel CVS-A01 Sensors via multi-function tabbed display
- Generate, Print, and Share Comprehensive TPMS & Tire Service Reports
- Upgrade to include Passenger Vehicles TPMS and All-Systems diagnostics, CV diagnostics and service coverage (additional purchase required); CV diagnostics coverage (coming soon)
- Pair with TBE200 Tire and Brake Examiner (purchase separately) for detailed tire thread depth analysis of Light Duty Vehicles
- Includes Deutsch 6 and 9 pin, and UNI-4 DLC adapters



#LOSTECHNICOSDEHOYREQUIRENEQUIPOSDEHOY

TELÉFONOS VENTAS:  
DIRECTO 55-1671-8044  
SERVICIO 55-5872-8806

WHATSAPP  
55-4603-3543

ventas@laredotools.com